

RIOK3 Antibody (Center)
Purified Rabbit Polyclonal Antibody (Pab)
Catalog # AP20884a**Specification**

RIOK3 Antibody (Center) - Product Information

Application	WB,E
Primary Accession	O14730
Reactivity	Human
Host	Rabbit
Clonality	Polyclonal
Isotype	Rabbit IgG
Calculated MW	59093

RIOK3 Antibody (Center) - Additional Information**Gene ID** 8780**Other Names**

Serine/threonine-protein kinase RIO3, RIO kinase 3, sudd homolog, RIOK3, SUDD

Target/Specificity

This RIOK3 antibody is generated from a rabbit immunized with a KLH conjugated synthetic peptide between 146-179 amino acids from the Central region of human RIOK3.

Dilution

WB~~1:1000

E~~Use at an assay dependent concentration.

Format

Purified polyclonal antibody supplied in PBS with 0.09% (W/V) sodium azide. This antibody is purified through a protein A column, followed by peptide affinity purification.

Storage

Maintain refrigerated at 2-8°C for up to 2 weeks. For long term storage store at -20°C in small aliquots to prevent freeze-thaw cycles.

Precautions

RIOK3 Antibody (Center) is for research use only and not for use in diagnostic or therapeutic procedures.

RIOK3 Antibody (Center) - Protein Information**Name** RIOK3**Synonyms** SUDD**Function** Involved in regulation of type I interferon (IFN)-dependent immune response which plays

a critical role in the innate immune response against DNA and RNA viruses. May act as an adapter protein essential for the recruitment of TBK1 to IRF3 (PubMed:[24807708](#)). Phosphorylates IFIH1 on 'Ser-828' interfering with IFIH1 filament assembly on long dsRNA and resulting in attenuated IFIH1-signaling (PubMed:[25865883](#)). Can inhibit CASP10 isoform 7-mediated activation of the NF-kappaB signaling pathway (PubMed:[19557502](#)). May play a role in the biogenesis of the 40S ribosomal subunit. Involved in the processing of 21S pre-rRNA to the mature 18S rRNA (PubMed:[22418843](#)).

Cellular Location

Cytoplasm.

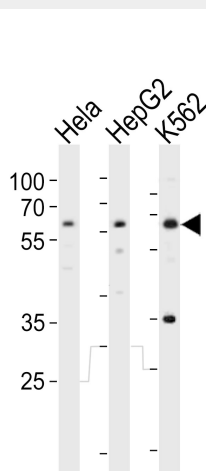
Tissue Location

Widely expressed..

RIOK3 Antibody (Center) - Protocols

Provided below are standard protocols that you may find useful for product applications.

- [Western Blot](#)
- [Blocking Peptides](#)
- [Dot Blot](#)
- [Immunohistochemistry](#)
- [Immunofluorescence](#)
- [Immunoprecipitation](#)
- [Flow Cytometry](#)
- [Cell Culture](#)

RIOK3 Antibody (Center) - Images

Western blot analysis of lysates from HeLa, HepG2, K562 cell line (from left to right), using RIOK3 Antibody (Center)(Cat. #AP20884a). AP20884a was diluted at 1:1000 at each lane. A goat anti-rabbit IgG H&L(HRP) at 1:10000 dilution was used as the secondary antibody. Lysates at 20ug per lane.

RIOK3 Antibody (Center) - References

Anaya P.,et al.Gene 211:323-329(1998).

Nusbaum C.,et al.Nature 437:551-555(2005).
Dephoure N.,et al.Proc. Natl. Acad. Sci. U.S.A. 105:10762-10767(2008).
Burkard T.R.,et al.BMC Syst. Biol. 5:17-17(2011).
Greenman C.,et al.Nature 446:153-158(2007).